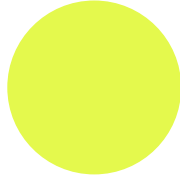


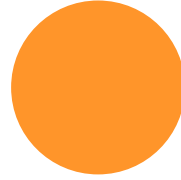
PVC FLEXIBLE FLEX (ESNEK FLEX)



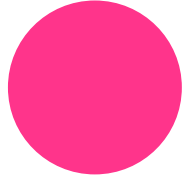
DS-01
White



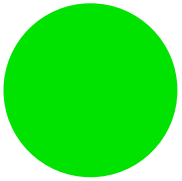
DS-02
Fluo Yellow



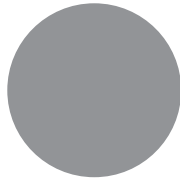
DS-03
Fluo Orange



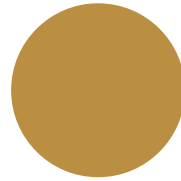
DS-04
Fluo Pink



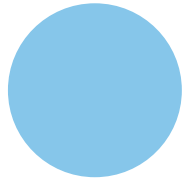
DS-05
Fluo Green



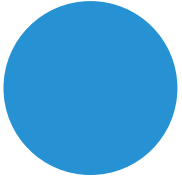
DS-06
Silver



DS-07
Gold



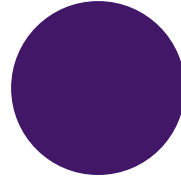
DS-08
Sky Blue



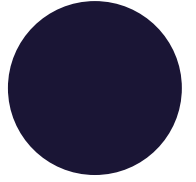
DS-09
N/Blue



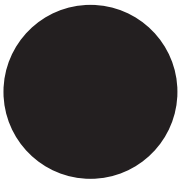
DS-10
R/Blue



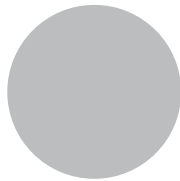
DS-11
Purple



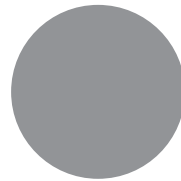
DS-12
Navy



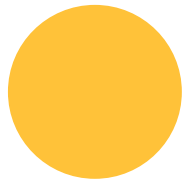
DS-13
Black



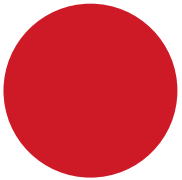
DS-14
N/Gray



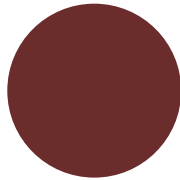
DS-15
Gray



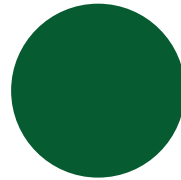
DS-16
Yellow



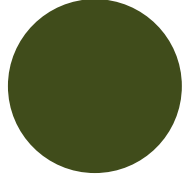
DS-17
Red



DS-18
Brown



DS-19
Green



DS-20
Khaki

PVC FLEXIBLE FLEX (ESNEK FLEX)

ÜRÜN TANIMI

Plotter ile kesim uygulamaları için esnek film flex malzeme

ÖZELLİKLER

Ebat: 50 cm x 50 m

Net kilo: 15 kg / rol

BASIM TALİMATLARI

Aşağıdaki talimatlar sadece normal şartlara göredir.

Derece: 150°C (302°F)

Baskı süresi: 15 saniye

KULLANIM TALİMATLARI

- 1) Film üzerinde lazer makinası ile ürünü tersten kesiniz.
- 2) Fazlalıkları çıkarınız.
- 3) Ürünü tişörtün üzerine koyunuz.
- 4) Orta basınçta 15 saniye presleyiniz.
- 5) Soğuk / ılıkken polyester taşıyıcı filmi çekiniz.

UYGUN KUMAŞLAR

Pamuk, polyester / pamuk karışımı, polyester / akrilik vb tekstiller için uygundur.

Boyanmış ve işlem görmüş kumaşlar için uygun değildir.

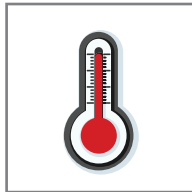
UYARI

Bu belgedeki bilgiler bizim tecrübelerimize dayanarak verilmiştir.

Size standart üretiminizden önce ürünümüzü test etmenizi öneririz.



Deseni tersten kesiniz



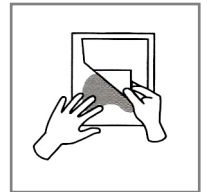
150°C (302°F)



-Orta basınç



15 saniye presleme



Ilık/Soğuk çekim