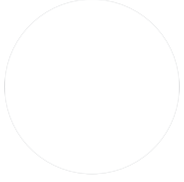
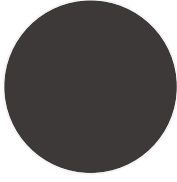


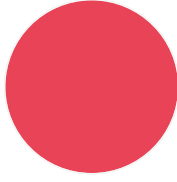
## PU FLEX GLOSS (100 MICRON)



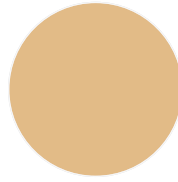
White  
GY100



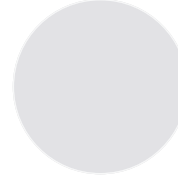
Black  
GY199



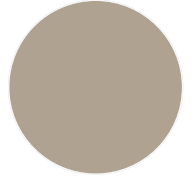
Red  
GY350



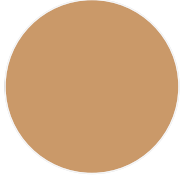
Gold  
GYM410



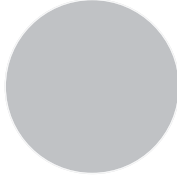
Silver  
GYM150



Graphite  
GYM600



Bronze  
GYM650



Cristal  
GYS000

# PU FLEX

## DESCRIPTION

Material for laser and plotter cutting applications

## ÜRÜN TANIMI

Lazer ve plotter ile kesim uygulamaları için malzeme

## SPECIFICATION

**Size:** 50 cm x 25 m

**N.W:** 5 kg / roll

## ÖZELLİKLER

**Ebat:** 50 cm x 25 m

**Net kilo:** 5 kg / rol

## TRANSFER CONDITION

The following instructions are given as guideline only.

**Temperature:** 160°C (320°F)

**Pressing time:** 12 seconds

## BASIM TALİMATLARI

Aşağıdaki talimatlar sadece normal şartlara göredir.

**Derece:** 160°C (320°F)

**Baskı süresi:** 12 saniye

## SUITABLE FOR

Cotton, mixtures of polyester / cotton and polyester / acrylic or for similar textile.

Not suitable for treated and dyed garments.

## UYGUN KUMAŞLAR

Pamuk, polyester / pamuk karışımı, polyester / akrilik vb tekstiller için uygundur.

Boyanmış ve işlem görmüş kumaşlar için uygun değildir.

## NOTICE

We offer you to test the product against the color migration.

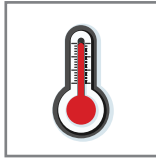
Pressing instruction may change, according to the fabric type.

## UYARI

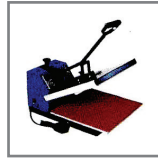
Boyalı kumaşlarda migrasyon ihtimaline karşı üretim öncesi gerekli testlerin yapılmasını öneririz. Kullanılacak kumaşın içeriğine göre, basım talimatları değişebilir.



Out the image in reverse  
Deseni tersten kesiniz



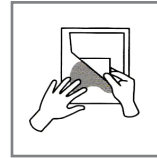
160°C (320°F)  
160°C (320°F)



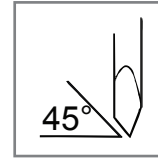
4 Bar pressure  
4 Bar basınç



12 seconds for pressing  
12 saniye presleme



HOT Peel  
Sıcak çekim



45°



After 24H with Application  
Uygulamadan 24 saat sonra