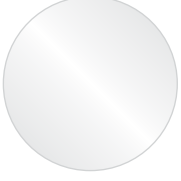
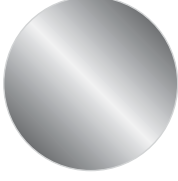


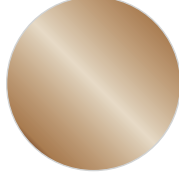
PU FLEX SOFT SHELL (160 MICRON)



White
SS100



Silver
SSM150



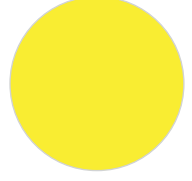
Gold
SSM410



Orange Fluo
SSF370



Pink Fluo
SSF390



Yellow Fluo
SSF450

PU FLEX

DESCRIPTION

Material for laser and plotter cutting applications

ÜRÜN TANIMI

Lazer ve plotter ile kesim uygulamaları için malzeme

SPECIFICATION

Size: 50 cm x 25 m
N.W: 5 kg / roll

ÖZELLİKLER

Ebat: 50 cm x 25 m
Net Kilo: 5 kg / roll

TRANSFER CONDITION

The following instructions are given as guideline only.

Temperature: 160°C (320°F)

Pressing time: 12 seconds

BASIM TALİMATLARI

Aşağıdaki talimatlar sadece normal şartlara göre.

Derece: 160°C (320°F)

Baskı süresi: 12 saniye

SUITABLE FOR

Cotton, mixtures of polyester / cotton and polyester / acrylic or for similar textile.

Not suitable for treated and dyed garments.

UYGUN KUMAŞLAR

Pamuk, polyester / pamuk karışımı, polyester / akrilik vb tekstiller için uygundur.

Boyanmış ve işlem görmüş kumaşlar için uygun değildir.

NOTICE

We offer you to test the product against the color migration.

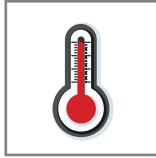
Pressing instruction may change, according to the fabric type.

UYARI

Boyalı kumaşlarda migrasyon ihtimaline karşı üretim öncesi gerekli testlerin yapılmasını öneririz. Kullanılacak kumaşın içeriğine göre, basım talimatları değişebilir.



Out the image in reverse
Deseni tersten kesiniz



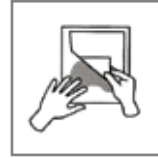
160°C (320°F)
160°C (320°F)



4 Bar pressure
4 Bar basınç



12 seconds for pressing
12 saniye presleme



COOL Peel
Soğuk çekim



45°



After 24H with Application
Uygulamadan 24 saat sonra