

## SOLID FOIL (100 MICRON)



Silver  
N-01



Gold  
N-02



Fuchsia  
N-03



Pink  
N-04



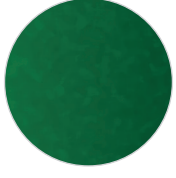
Red  
N-05



R/Blue  
N-06



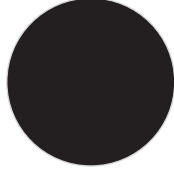
Violet  
N-07



Green  
N-08



Sky  
N-09



Black  
N-10



Clear  
N-11



Orange  
N-12



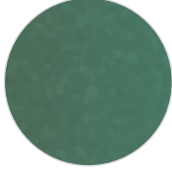
Aqua  
N-13



L/Green  
N-14



Copper  
N-15



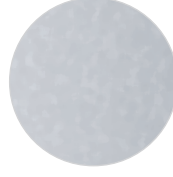
Mint  
N-16



L/Brown  
N-17



Grey  
N-18



M/Silver  
N-19



Rainbow  
N-20



White  
N-21

# SOLID FOIL

## DESCRIPTION

Material for laser and plotter cutting applications

## ÜRÜN TANIMI

Lazer ve plotter ile kesim uygulamaları için malzeme

## SPECIFICATION

**Size:** 50 cm x 100 m

**N.W:** 14 kg / roll

## ÖZELLİKLER

**Ebat:** 50 cm x 100 m

**Net kilo:** 14 kg / rol

## TRANSFER CONDITION

The following instructions are given as guideline only.

**Temperature:** 160°C (320°F)

**Pressing time:** 12 seconds

## BASIM TALİMATLARI

Aşağıdaki talimatlar sadece normal şartlara göredir.

**Derece:** 160°C (320°F)

**Baskı süresi:** 12 saniye

## SUITABLE FOR

Cotton, mixtures of polyester / cotton and polyester / acrylic or for similar textile.

Not suitable for treated and dyed garments.

## UYGUN KUMAŞLAR

Pamuk, polyester / pamuk karışımı, polyester / akrilik vb tekstiller için uygundur.

Boyanmış ve işlem görmüş kumaşlar için uygun değildir.

## NOTICE

We offer you to test the product against the color migration.

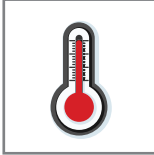
Pressing instruction may change, according to the fabric type.

## UYARI

Boyalı kumaşlarda migrasyon ihtimaline karşı üretim öncesi gerekli testlerin yapılmasını öneririz. Kullanılacak kumaşın içeriğine göre, basım talimatları değişebilir.



Cut the image in reverse  
Deseni tersten kesiniz



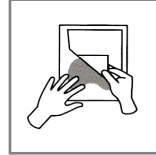
160°C (320°F)  
160°C (320°F)



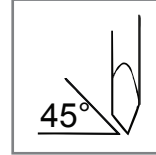
4 Bar pressure  
4 Bar basınç



12 seconds for pressing  
12 saniye presleme



COOL Peel  
Soğuk çekim



45°



After 24H with Application  
Uygulamadan 24 saat sonra