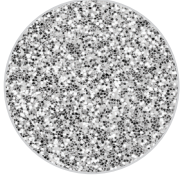


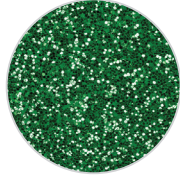
## GLITTER (300-350 MICRON)



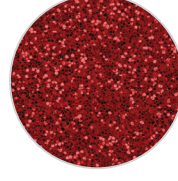
GS-01



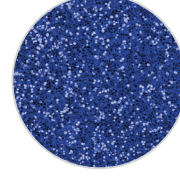
GS-02



GS-03



GS-05



GS-06



GS-07



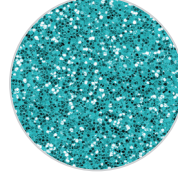
GS-08



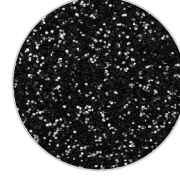
GS-09



GS-10



GS-11



GS-12



GS-17



GS-18



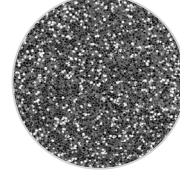
GS-19



GS-20



GS-24



GS-25



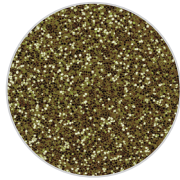
GS-26



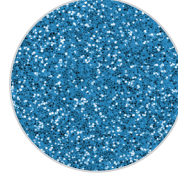
GS-27



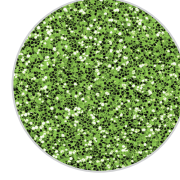
GS-29



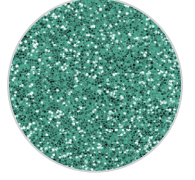
GS-32



GS-33



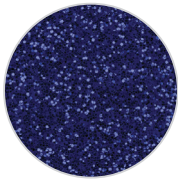
GS-35



GS-41



GS-45



GS-46



GS-63

# GLITTER

## DESCRIPTION

Material for laser and plotter cutting applications

## ÜRÜN TANIMI

Lazer ve plotter ile kesim uygulamaları için malzeme

## SPECIFICATION

**Size:** 50 cm x 50 m  
**N.W:** 11 kg / roll

## ÖZELLİKLER

**Ebat:** 50 cm x 50 m  
**Net kilo:** 11 kg / rol

## TRANSFER CONDITION

The following instructions are given as guideline only.

**Temperature:** 160°C (320°F)

**Pressing time:** 12 seconds

## BASIM TALİMATLARI

Aşağıdaki talimatlar sadece normal şartlara göredir.

**Derece:** 160°C (320°F)

**Baskı süresi:** 12 saniye

## SUITABLE FOR

Cotton, mixtures of polyester / cotton and polyester / acrylic or for similar textile.

Not suitable for treated and dyed garments.

## UYGUN KUMAŞLAR

Pamuk, polyester / pamuk karışımı, polyester / akrilik vb tekstiller için uygundur.

Boyanmış ve işlem görmüş kumaşlar için uygun değildir.

## NOTICE

We offer you to test the product against the color migration.

Pressing instruction may change, according to the fabric type.

## UYARI

Boyalı kumaşlarda migrasyon ihtimaline karşı üretim öncesi gerekli testlerin yapılmasını öneririz. Kullanılacak kumaşın içeriğine göre, basım talimatları değişebilir.



Out the image in reverse  
Deseni tersten kesiniz



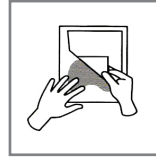
160°C (320°F)  
160°C (320°F)



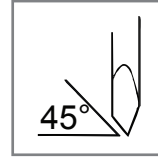
4 Bar pressure  
4 Bar basınç



12 seconds for pressing  
12 saniye presleme



COOL Peel  
Soğuk çekim



45°



After 24H with Application  
Uygulamadan 24 saat sonra