

CHAMELEON TPU (550 MICRON)



MS700D
Silver



MS701D
Red



MS702D
Blue



MS704D
Green



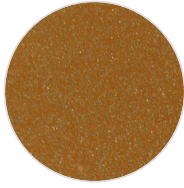
MS705D
Black



MS705D-P
P.Black



MS706D
White



MS707D
Gold



MS708D
Purple

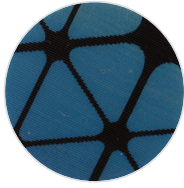


MS710D
Chrome Silver

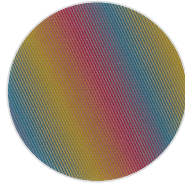
LENTICULAR RAINBOW (400 MICRON)



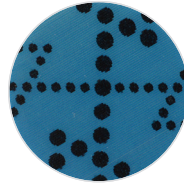
1



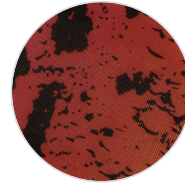
2



3



4



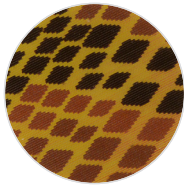
5



6



7



8

CHAMELEON TPU / LENTICULAR RAINBOW

DESCRIPTION

Material for laser cutting applications

SPECIFICATION

CHAMELEON TPU

Size: 50 cm x 25 m

N.W: 13 kg / roll

LENTICULAR RAINBOW

Sheet Size: 45 cm x 62 cm

TRANSFER CONDITION

The following instructions are given as guideline only.

CHAMELEON TPU

1. step face side 2. step back side

Temp: 160°C (320°F) 160°C (320°F)

Pressing Time: 5 seconds 10 seconds

LENTICULAR RAINBOW

Temp: 135°C (275°F) - Pressing Time: 13 seconds

SUITABLE FOR

Cotton, mixtures of polyester / cotton and polyester / acrylic or for similar textile.

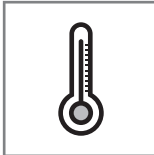
Not suitable for treated and dyed garments.

NOTICE

We offer you to test the product against the color migration. Pressing instruction may change, according to the fabric type.

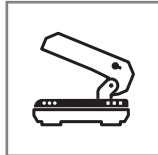


Cut the image in reverse
Deseni tersten kesiniz



CHAMELEON TPU
160°C (320°F)

LENTICULAR RAINBOW
135°C (275°F)



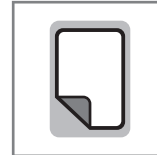
4 Bar pressure
4 Bar basınç



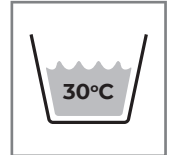
CHAMELEON
5 seconds for face side pressing
10-15 seconds for backside pressing

5 saniye ön yüz presleme
10-15 saniye arka yüz presleme

LENTICULAR RAINBOW
13 seconds for backside pressing
13 saniye arka yüz presleme



COOL Peel
Soğuk çekim



After 24H with application
Uygulamadan 24 saat sonra

ÜRÜN TANIMI

Lazer kesim uygulamaları için malzeme

ÖZELLİKLER

CHAMELEON

Ebat: 50 cm x 25 m

Net Ağırlık: 13 kg / roll

LENTICULAR RAINBOW

Tabaka Ebadı: 27 cm x 45 m

BASKI TALİMATLARI

Aşağıdaki talimatlar sadece normal şartlara göredir.

CHAMELEON TPU

1. adım ön yüz 2. adım arka yüz

Derece: 160°C (320°F) 160°C (320°F)

Baskı Süresi: 5 saniye 10 saniye

LENTICULAR RAINBOW

Derece: 135°C (275°F) - Baskı Süresi: 13 saniye

UYGUN KUMAŞLAR

Pamuk, polyester / pamuk karışımı, polyester / akrilik vb tekstiller için uygundur.

Boyanmış ve işlem görmüş kumaşlar için uygun değildir.

UYARI

Boyalı kumaşlarda migrasyon ihtimaline karşı üretim öncesi gerekli testlerin yapılmasını öneririz. Kullanılacak kumaşın içeriğine göre, basım talimatları değişebilir.