

### PU FLEX GLITTER (150 MICRON)



G100  
White



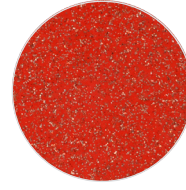
G199  
Black



G230  
Blue



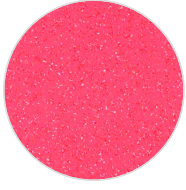
G290  
Purple



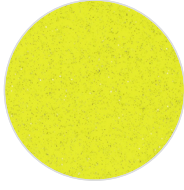
G350  
Red



G370  
Orange Fluo



G390  
Pink



G450  
Yellow Fluo



GM410  
Gold



GM150  
Silver

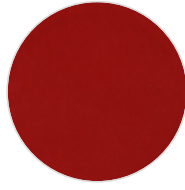
### PU FLEX GLOSS (100 MICRON)



G100  
White



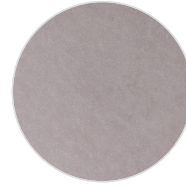
G199  
Black



GY350  
Red



GYM410  
Gold



GYM150  
Silver



GYM600  
Graphite



GYM650  
Bronze



GYS000  
Crystal

### PU FLEX LUMINOUS (150 MICRON)



LMN  
Luminous

# PU FLEX

## DESCRIPTION

Material for laser and plotter cutting applications

## SPECIFICATION

Size: 50 cm x 25 m  
N.W: 5 kg / roll

## TRANSFER CONDITION

The following instructions are given as guideline only.  
Temperature: 160°C (320°F)  
Pressing Time: 12 seconds

## SUITABLE FOR

Cotton, mixtures of polyester / cotton and polyester / acrylic or for similar textile.  
Not suitable for treated and dyed garments.

## NOTICE

We offer you to test the product against the color migration.  
Pressing instruction may change, according to the fabric type.

## ÜRÜN TANIMI

Lazer ve plotter kesim uygulamaları için malzeme

## ÖZELLİKLER

Ebat: 50 cm x 25 m  
Net Ağırlık: 5 kg / roll

## BASKI TALİMATLARI

Aşağıdaki talimatlar sadece normal şartlara göredir.  
Derece: 160°C (320°F)  
Baskı Süresi: 12 saniye

## UYGUN KUMAŞLAR

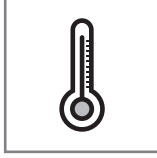
Pamuk, polyester / pamuk karışımı, polyester / akrilik vb tekstiller için uygundur.  
Boyanmış ve işlem görmüş kumaşlar için uygun değildir.

## UYARI

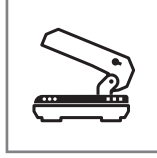
Boyalı kumaşlarda migrasyon ihtimaline karşı üretim öncesi gerekli testlerin yapılmasını öneririz. Kullanılacak kumaşın içeriğine göre, basım talimatları değişebilir.



Cut the image in reverse  
Deseni tersten kesiniz



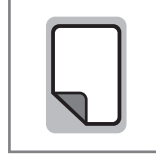
160°C (320°F)



4 Bar pressure  
4 Bar basınç

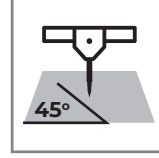


12 seconds for pressing  
12 saniye presleme

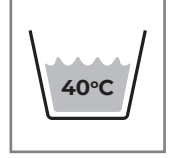


COOL Peel  
Soğuk çekim

PU FLEX GLOSS  
HOT Peel  
Sıcak çekim



45°



After 24H with application  
Uygulamadan 24 saat sonra