


**PU FLEX (90 MICRON)**

OEKO-TEX®  
CONFIDENCE IN TEXTILES  
**STANDARD 100**  
1110046 Centarbel  
Tested for harmful substances,  
www.oeko-tex.com/standard100



S100  
White

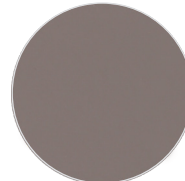
OEKO-TEX®  
CONFIDENCE IN TEXTILES  
**STANDARD 100**  
1110046 Centarbel  
Tested for harmful substances,  
www.oeko-tex.com/standard100



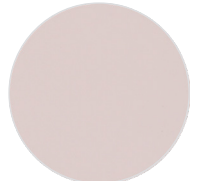
S199  
Black



S103  
Ardesia



S105  
Grey



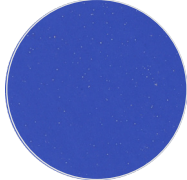
S106  
Ice Grey



S205  
Navy Blue



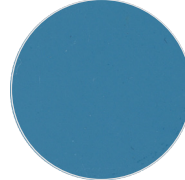
S207  
Middle Blue



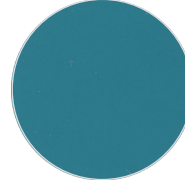
S210  
Blue 55



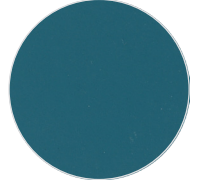
S230  
Royal Blue



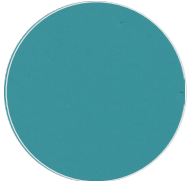
S240  
Blue 48



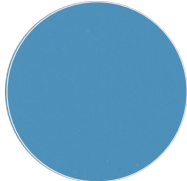
S245  
Teal Blue



S250  
Torquoise



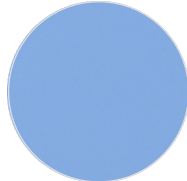
S255  
Aqua Green



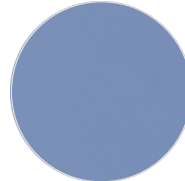
S260  
Sapphire



S270  
Blue Layette



S280  
Sky Blue



S285  
Lilac



S290  
Purple



S300  
Aubergine



S305  
Violetto 16



S310  
Brown



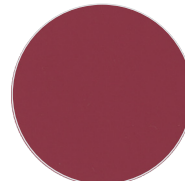
S320  
Leather Brown



S330  
Bordeaux



S333  
Camel



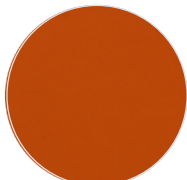
S340  
Cardinal Red



S350  
Red



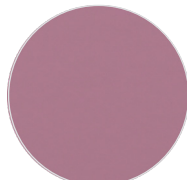
S360  
Flame Red



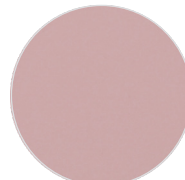
S370  
Orange



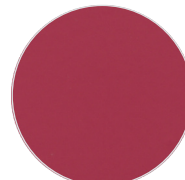
S375  
Salmon



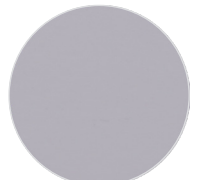
S380  
Magenta



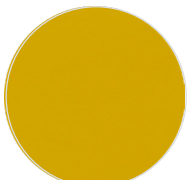
S390  
Pink



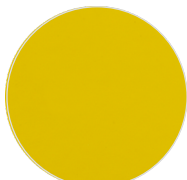
S395  
Rosa 14



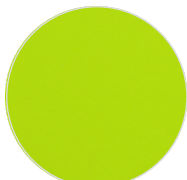
S400  
Violetto 17



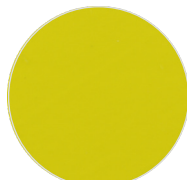
S410  
Gold Yellow



S430  
Medium Yellow



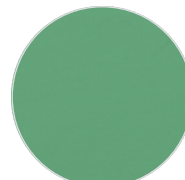
S440  
Lime



S450  
Lemon Yellow



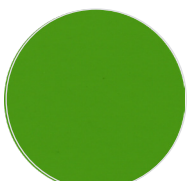
S490  
Beige



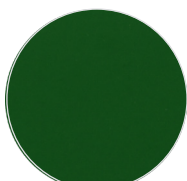
S515  
Mosaic Green



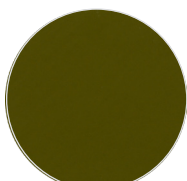
S520  
Apple Green



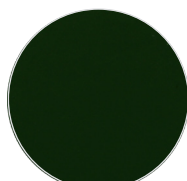
S530  
Green 48



S540  
Green



S550  
Olive



S560  
Forest Green



S580  
Military Green

# PU FLEX

## DESCRIPTION

Material for laser and plotter cutting applications

## SPECIFICATION

Size: 50 cm x 25 m  
N.W: 5 kg / roll

## TRANSFER CONDITION

The following instructions are given as guideline only.  
**Temperature:** 160°C (320°F)  
**Pressing Time:** 12 seconds

## SUITABLE FOR

*Cotton, mixtures of polyester / cotton and polyester / acrylic or for similar textile.  
Not suitable for treated and dyed garments.*

## NOTICE

*We offer you to test the product against the color migration.  
Pressing instruction may change, according to the fabric type.*

## ÜRÜN TANIMI

Lazer ve plotter kesim uygulamaları için malzeme

## ÖZELLİKLER

Ebat: 50 cm x 25 m  
Net Ağırlık: 5 kg / roll

## BASKI TALİMATLARI

Aşağıdaki talimatlar sadece normal şartlara göredir.  
**Derece:** 160°C (320°F)  
**Baskı Süresi:** 12 saniye

## UYGUN KUMAŞLAR

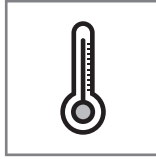
*Pamuk, polyester / pamuk karışımı, polyester / akrilik vb tekstiller için uygundur.  
Boyanmış ve işlem görmüş kumaşlar için uygun değildir.*

## UYARI

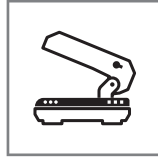
*Boyalı kumaşlarda migrasyon ihtimaline karşı üretim öncesi gerekli testlerin yapılmasını öneririz. Kullanılacak kumaşın içeriğine göre, basım talimatları değişebilir.*



Cut the image in reverse  
Deseni tersten kesiniz



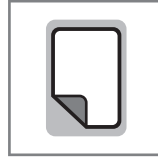
160°C (320°F)



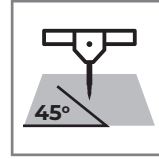
4 Bar pressure  
4 Bar basınç



12 seconds for pressing  
12 saniye presleme



WARM Peel  
Ilık çekim



45°



After 24H with application  
Uygulamadan 24 saat sonra