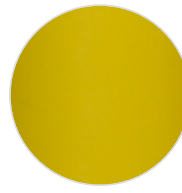
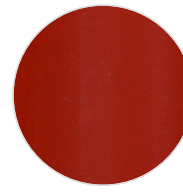


**PU NORMAL (90 MICRON)**

 PN01  
White

 PN02  
Black

 PN03  
Royal Blue

 PN04  
Navy Blue

 PN05  
Yellow

 PN06  
Red

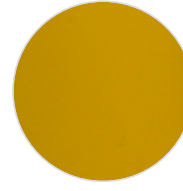
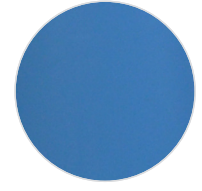
 PN07  
Orange

 PN08  
Green

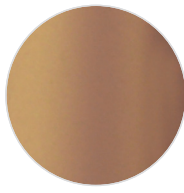
 PN09  
Gray

 PN10  
Dark Gray

 PN11  
Gold

 PN12  
Silver

 PN13  
Golden Yellow

 PN14  
Sky Blue

 PN15  
Purple

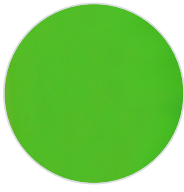
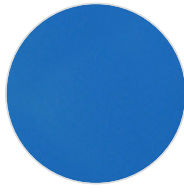
 PN16  
Maroon

 PN17  
Rose Gold

 PN18  
Warm Gray

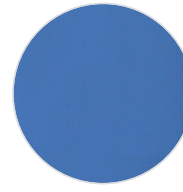
 PN19  
Brown

 PN20  
Neon Yellow

 PN21  
Neon Orange

 PN22  
Neon Pink

 PN23  
Neon Green

 PN24  
Neon Blue

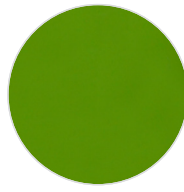
 PN25  
Mid Blue

 PN26  
Light Blue

 PN27  
Aqua Blue

 PN28  
Aqua Marine

 PN29  
Turquoise

 PN32  
Khaki

 PN34  
Light Green

 PN35  
Apple Green

 PN36  
Mint

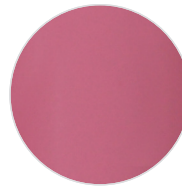
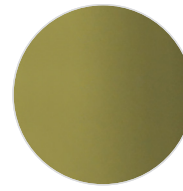
 PN38  
Red Orange

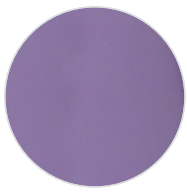
 PN41  
Lemon Yellow

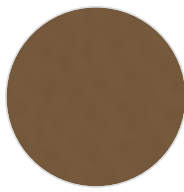
 PN42  
Lime Yellow

 PN44  
Magenta

 PN45  
Fuchsia

 PN46  
Sun Red

 PN47  
Pink

 PN50  
Vegas Gold

 PN52  
Cream

 PN54  
Lavender

 PN56  
Dark Green

 PN57  
Camel

# PU NORMAL

## DESCRIPTION

Material for laser and plotter cutting applications

## SPECIFICATION

Size: 50 cm x 25 m  
N.W: 4,5 kg / roll

## TRANSFER CONDITION

The following instructions are given as guideline only.  
**Temperature:** 150°C (302°F)  
**Pressing Time:** 8-10 seconds

## SUITABLE FOR

*Cotton, mixtures of polyester / cotton and polyester / acrylic or for similar textile.  
Not suitable for treated and dyed garments.*

## NOTICE

*We offer you to test the product against the color migration.  
Pressing instruction may change, according to the fabric type.*

## ÜRÜN TANIMI

Lazer ve plotter kesim uygulamaları için malzeme

## ÖZELLİKLER

Ebat: 50 cm x 25 m  
Net Ağırlık: 4,5 kg / roll

## BASKI TALİMATLARI

Aşağıdaki talimatlar sadece normal şartlara göredir.  
**Derece:** 150°C (302°F)  
**Baskı Süresi:** 8-10 saniye

## UYGUN KUMAŞLAR

*Pamuk, polyester / pamuk karışımı, polyester / akrilik vb tekstiller için uygundur.  
Boyanmış ve işlem görmüş kumaşlar için uygun değildir.*

## UYARI

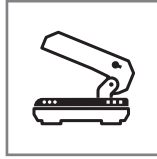
*Boyalı kumaşlarda migrasyon ihtimaline karşı üretim öncesi gerekli testlerin yapılmasını öneririz. Kullanılacak kumaşın içeriğine göre, basım talimatları değişebilir.*



Cut the image in reverse  
Deseni tersten kesiniz



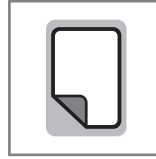
150°C (302°F)



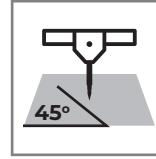
4 Bar pressure  
4 Bar basınç



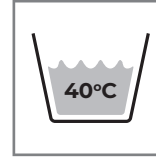
8-10 seconds for pressing  
8-10 saniye presleme



HOT Peel  
Sıcak çekim



45°



After 24H with application  
Uygulamadan 24 saat sonra