

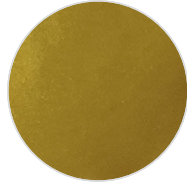
### ECO PU (90 MICRON)



PE-01



PE-02



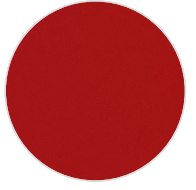
PE-03



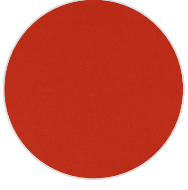
PE-04



PE-05



PE-06



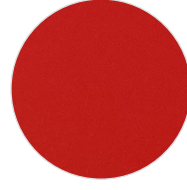
PE-07



PE-08



PE-09



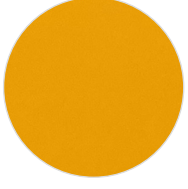
PE-10



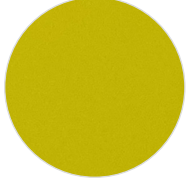
PE-11



PE-12



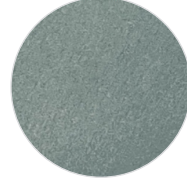
PE-13



PE-14



PE-15



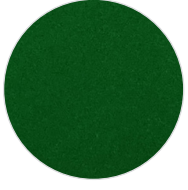
PE-16



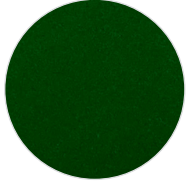
PE-17



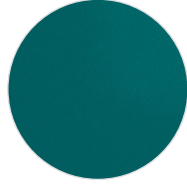
PE-18



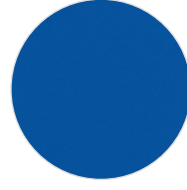
PE-19



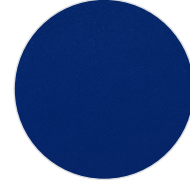
PE-20



PE-21



PE-22



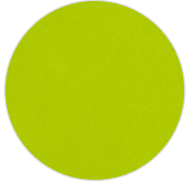
PE-23



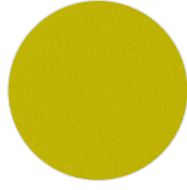
PE-24



PE-25



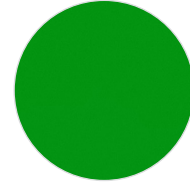
PE-26



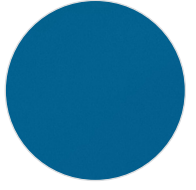
PE-27



PE-28



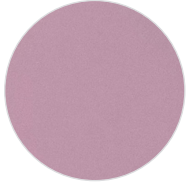
PE-29



PE-30



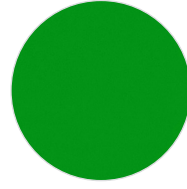
PE-31



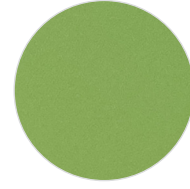
PE-32



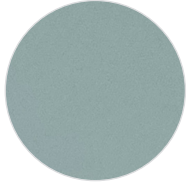
PE-33



PE-34



PE-35



PE-36

# ECO PU

## DESCRIPTION

Material for laser and plotter cutting applications

## SPECIFICATION

Size: 50 cm x 45,5 m  
N.W: 9 kg / roll

## TRANSFER CONDITION

The following instructions are given as guideline only.  
**Temperature:** 160°C (320°F)  
**Pressing Time:** 12 seconds

## SUITABLE FOR

*Cotton, mixtures of polyester / cotton and polyester / acrylic or for similar textile.  
Not suitable for treated and dyed garments.*

## NOTICE

*We offer you to test the product against the color migration.  
Pressing instruction may change, according to the fabric type.*

## ÜRÜN TANIMI

Lazer ve plotter kesim uygulamaları için malzeme

## ÖZELLİKLER

Ebat: 50 cm x 45,5 m  
Net Ağırlık: 9 kg / roll

## BASKI TALİMATLARI

Aşağıdaki talimatlar sadece normal şartlara göredir.  
**Derece:** 160°C (320°F)  
**Baskı Süresi:** 12 saniye

## UYGUN KUMAŞLAR

*Pamuk, polyester / pamuk karışımı, polyester / akrilik vb tekstiller için uygundur.  
Boyanmış ve işlem görmüş kumaşlar için uygun değildir.*

## UYARI

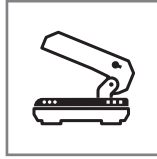
*Boyalı kumaşlarda migrasyon ihtimaline karşı üretim öncesi gerekli testlerin yapılmasını öneririz. Kullanılacak kumaşın içeriğine göre, basım talimatları değişebilir.*



Cut the image in reverse  
Deseni tersten kesiniz



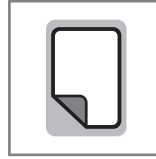
160°C (320°F)



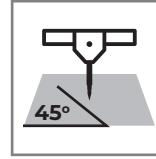
4 Bar pressure  
4 Bar basınç



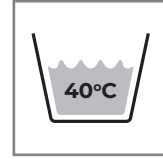
12 seconds for pressing  
12 saniye presleme



HOT & COOL Peel  
Sıcak ve soğuk çekim



45°



After 24H with application  
Uygulamadan 24 saat sonra