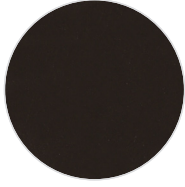
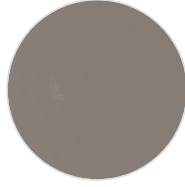
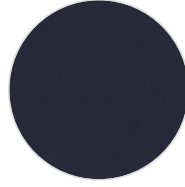
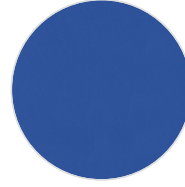
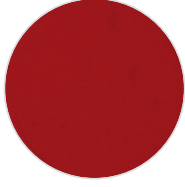
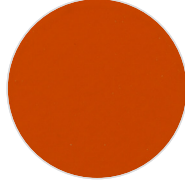
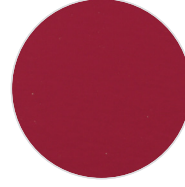
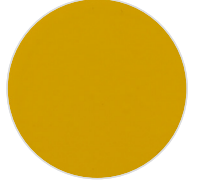
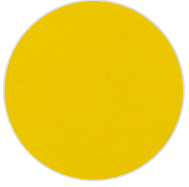
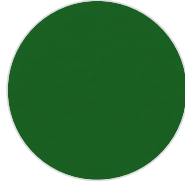
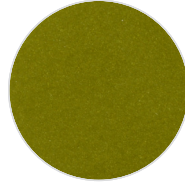
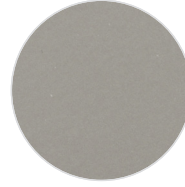


PU FLEX (70 MICRON)S100
WhiteS199
BlackS105
GreyS205
Navy BlueS230
Royal BlueS280
Sky BlueS330
BordeauxS350
RedS370
OrangeS390
PinkS395
Rosa 14S410
Gold YellowS430
Medium YellowS450
Lemon YellowS540
GreenM410
GoldM150
Silver

PU FLEX

DESCRIPTION

Material for plotter cutting applications

SPECIFICATION

Size: 50 cm x 25 m
N.W: 5 kg / roll

TRANSFER CONDITION

The following instructions are given as guideline only.
Temperature: 160°C (320°F)
Pressing Time: 12 seconds

SUITABLE FOR

Cotton, mixtures of polyester / cotton and polyester / acrylic or for similar textile.
Not suitable for treated and dyed garments.

NOTICE

We offer you to test the product against the color migration.
Pressing instruction may change, according to the fabric type.

ÜRÜN TANIMI

Plotter kesim uygulamaları için malzeme

ÖZELLİKLER

Ebat: 50 cm x 25 m
Net Ağırlık: 5 kg / roll

BASKI TALİMATLARI

Aşağıdaki talimatlar sadece normal şartlara göredir.
Derece: 160°C (320°F)
Baskı Süresi: 12 saniye

UYGUN KUMAŞLAR

Pamuk, polyester / pamuk karışımı, polyester / akrilik vb tekstiller için uygundur.
Boyanmış ve işlem görmüş kumaşlar için uygun değildir.

UYARI

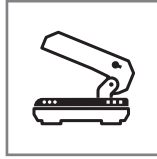
Boyalı kumaşlarda migrasyon ihtimaline karşı üretim öncesi gerekli testlerin yapılmasını öneririz. Kullanılacak kumaşın içeriğine göre, basım talimatları değişebilir.



Cut the image in reverse
Deseni tersten kesiniz



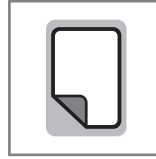
160°C (320°F)



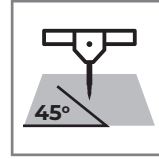
4 Bar pressure
4 Bar basınç



12 seconds for pressing
12 saniye presleme



WARM Peel
Ilık çekim



45°



After 24H with application
Uygulamadan 24 saat sonra