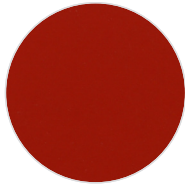
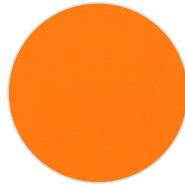
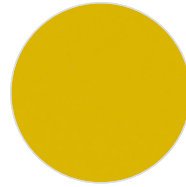
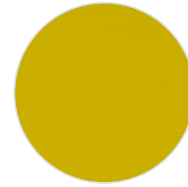
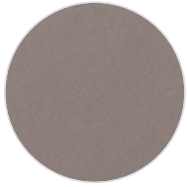
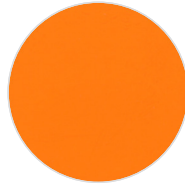
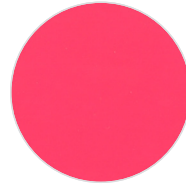
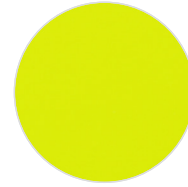
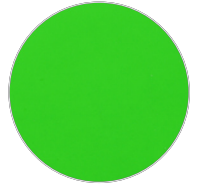
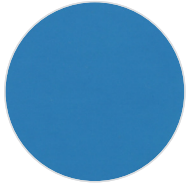
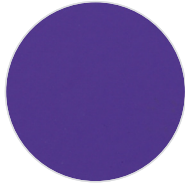
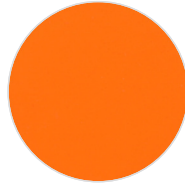
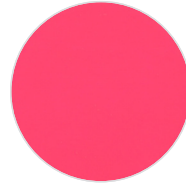
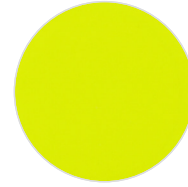
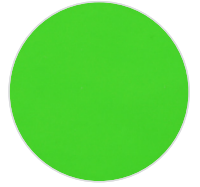


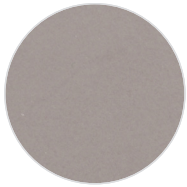
PU FLEX SUBLISTOP (150 MICRON)

 SB100
White

 SB350
Red

 SB370
Orange

 SB410
Gold Yellow

 SB430
Medium Yellow

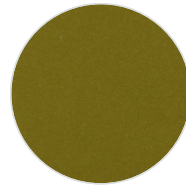
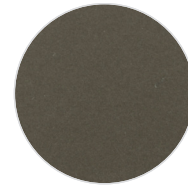
 SB450
Lemon Yellow

 SBM150
Silver

 SBM410
Gold

 SBF370
Orange Fluo

 SBF390
Pink Fluo

 SBF450
Yellow Fluo

 SBF540
Green Fluo

PU FLEX FLUO (120 MICRON)

 F280
Blue

 F295
Violet

 F370
Orange

 F390
Pink

 F450
Yellow

 F540
Green

PU FLEX METALLIC (90 MICRON)

 M150
Silver

 M199
Black

 M390
Pink

 M410
Gold

 M600
Graphite

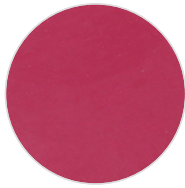
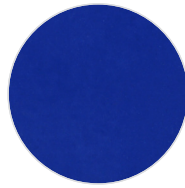
 M650
Bronze

 M660
Copper Gold

 M700
Rame

 M750
Gold Ad

PU FLEX SHINE (120 MICRON)

 SH150
Pearl

 SH206
Pink

 SH286
Blue

 SH379
Yellow

PU FLEX

DESCRIPTION

PU FLEX SUBLISTOP - Laser and plotter cutting
PU FLEX FLUO - Laser and plotter cutting
PU FLEX SHINE - Laser and plotter cutting
PU FLEX METALLIC - Only for plotter cutting application

SPECIFICATION

Size: 50 cm x 25 m
N.W: 5 kg / roll

TRANSFER CONDITION

The following instructions are given as guideline only.
Temperature: 160°C (320°F)
Pressing Time: 12 seconds

SUITABLE FOR

Cotton, mixtures of polyester / cotton and polyester / acrylic or for similar textile.
Not suitable for treated and dyed garments.

NOTICE

We offer you to test the product against the color migration.
Pressing instruction may change, according to the fabric type.

ÜRÜN TANIMI

PU FLEX SUBLISTOP - Lazer ve plotter kesim
PU FLEX FLUO - Lazer ve plotter kesim
PU FLEX SHINE - Lazer ve plotter kesim
PU FLEX METALLIC - Sadece plotter kesim uyg. için malzeme

ÖZELLİKLER

Ebat: 50 cm x 25 m
Net Ağırlık: 5 kg / roll

BASKI TALİMATLARI

Aşağıdaki talimatlar sadece normal şartlara göredir.
Derece: 160°C (320°F)
Baskı Süresi: 12 saniye

UYGUN KUMAŞLAR

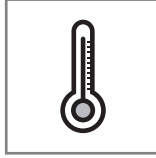
Pamuk, polyester / pamuk karışımı, polyester / akrilik vb tekstiller için uygundur.
Boyanmış ve işlem görmüş kumaşlar için uygun değildir.

UYARI

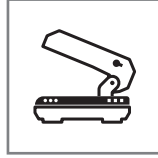
Boyalı kumaşlarda migrasyon ihtimaline karşı üretim öncesi gerekli testlerin yapılmasını öneririz. Kullanılacak kumaşın içeriğine göre, basım talimatları değişebilir.



Cut the image in reverse
Deseni tersten kesiniz



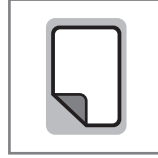
160°C (320°F)



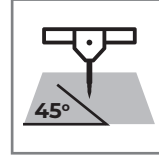
4 Bar pressure
4 Bar basınç



12 seconds for pressing
12 saniye presleme



COOL Peel
Soğuk çekim
PU FLEX SUBLISTOP
WARM Peel
Ilık çekim



45°



After 24H with application
Uygulamadan 24 saat sonra