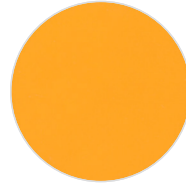
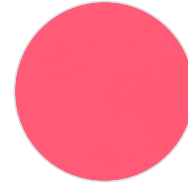
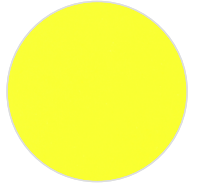
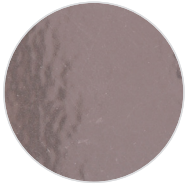
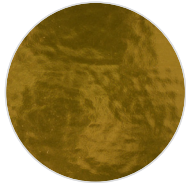


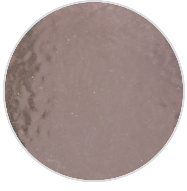
**PU FLEX SOFT SHELL (160 MICRON)**

 SS100  
White

 SSM150  
Silver

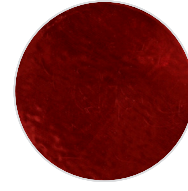
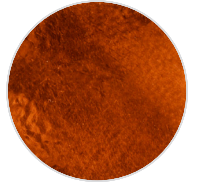
 SSM410  
Gold

 SSF370  
Orange Fluo

 SSF390  
Pink Fluo

 SSF450  
Yellow Fluo

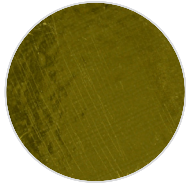
**PU FLEX MIRROR (90 MICRON)**

 SMR150  
Silver

 SMR410  
Gold

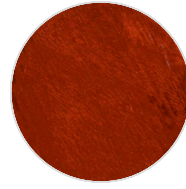
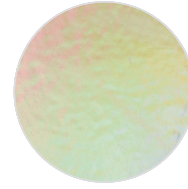
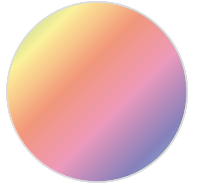
**PU FLEX SOFT MIRROR (70 MICRON)**

 SMR150  
Silver

 SMR410  
Gold

 SMR255  
Aqua

 SMR290  
Purple

 SMR360  
Flame Red

 SMR370  
Orange

 SMR500  
Titanium

 SMR515  
Olive

 SMR540  
Green

 SMR700  
Copper

 SMRH  
Holographic

 SMMS  
Multispot

 SMMLG  
Military Green

 SMMLW  
Military White

 SMR450  
Leo Silver

 SMR540  
Leo Gold

# PU FLEX

## DESCRIPTION

Material for laser and plotter cutting applications

## SPECIFICATION

### PU FLEX SOFT SHELL

Size: 50 cm x 25 m  
N.W: 5 kg / roll

### PU SOFT MIRROR

Size: 50 cm x 25 m  
N.W: 3,5 kg / roll

### PU FLEX MIRROR

Size: 50 cm x 25 m  
N.W: 4 kg / roll

## ÜRÜN TANIMI

Lazer ve plotter kesim uygulamaları için malzeme

## ÖZELLİKLER

### PU FLEX SOFT SHELL

Ebat: 50 cm x 25 m  
Net Ağırlık: 5 kg / roll

### PU SOFT MIRROR

Ebat: 50 cm x 50 m  
Net Ağırlık: 3,5 kg / roll

### PU FLEX MIRROR

Ebat: 50 cm x 25 m  
Net Ağırlık: 4 kg / roll

## TRANSFER CONDITION

The following instructions are given as guideline only.

Temperature: 160°C (320°F)

Pressing Time: 12 seconds

## BASKI TALİMATLARI

Aşağıdaki talimatlar sadece normal şartlara göre.

Derece: 160°C (320°F)

Baskı Süresi: 12 saniye

## SUITABLE FOR

Cotton, mixtures of polyester / cotton and polyester / acrylic or for similar textile.

Not suitable for treated and dyed garments.

## UYGUN KUMAŞLAR

Pamuk, polyester / pamuk karışımı, polyester / akrilik vb tekstiller için uygundur.

Boyanmış ve işlem görmüş kumaşlar için uygun değildir.

## NOTICE

We offer you to test the product against the color migration. Pressing instruction may change, according to the fabric type.

## UYARI

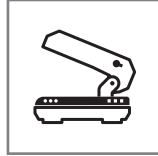
Boyalı kumaşlarda migrasyon ihtimaline karşı üretim öncesi gerekli testlerin yapılmasını öneririz. Kullanılacak kumaşın içeriğine göre, basım talimatları değişebilir.



Cut the image in reverse  
Deseni tersten kesiniz



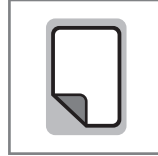
160°C (320°F)



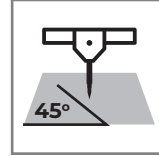
4 Bar pressure  
4 Bar basınç



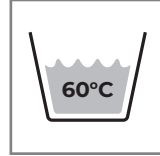
12 seconds for pressing  
12 saniye presleme



WARM Peel  
Ilık çekim  
PU FLEX SOFT SHELL  
COOL Peel  
Soğuk çekim



45°



After 24H with application  
Uygulamadan 24 saat sonra