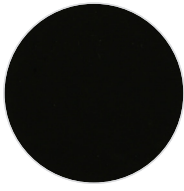
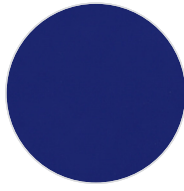
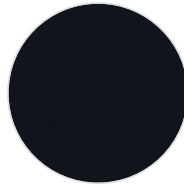
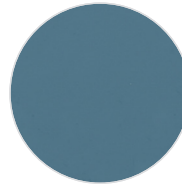
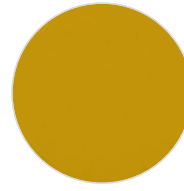
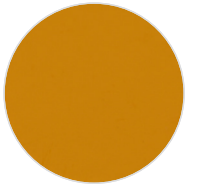
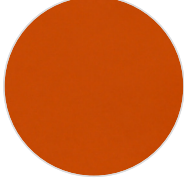
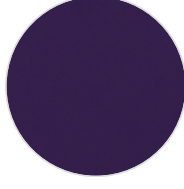
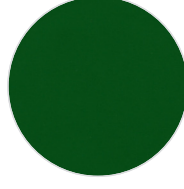
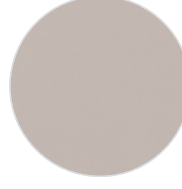
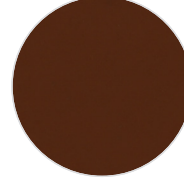
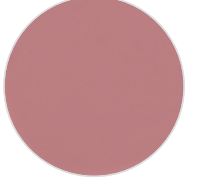
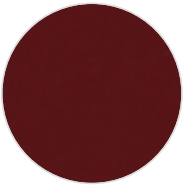
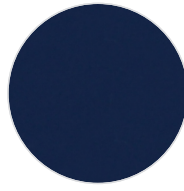
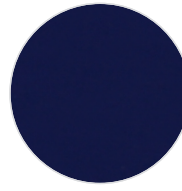
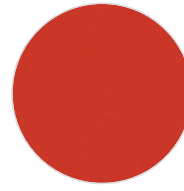
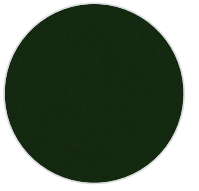


PVC FLEX (190 MICRON)

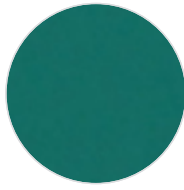
 OS001
White

 OS002
Black

 OS003
Royal Blue

 OS004
Navy Blue

 OS005
Sky Blue

 OS006
Yellow

 OS007
Golden Yellow

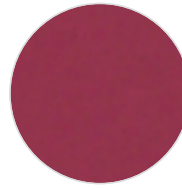
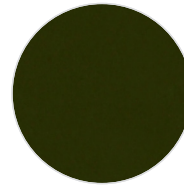
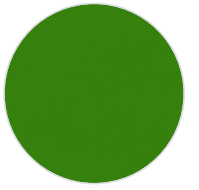
 OS008
Red

 OS009
Orange

 OS010
Purple

 OS011
Green

 OS012
Gray

 OS013
Brown

 OS014
Pink

 OS015
Maroon

 OS016
Gold

 OS017
Silver

 OS018
Dark Blue

 OS019
Deep Blue

 OS020
Hot Red

 OS021
Dark Green

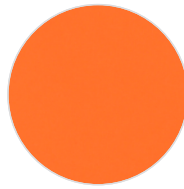
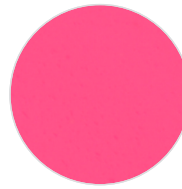
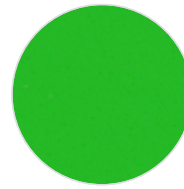
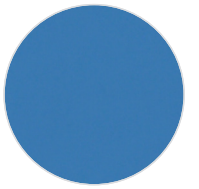
 OS022
Lime Yellow

 OS023
Aqua Blue

 OS024
Aqua Marine

 OS025
Camel

 OS026
Fuchsia

 OS027
Khaki

 OS028
Light Green

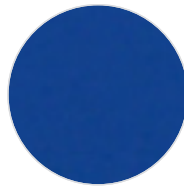
 OS029
Dark Silver

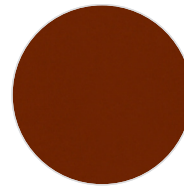
 OS030
Light Grey

 OS031
Neon Yellow

 OS032
Neon Orange

 OS033
Neon Pink

 OS034
Neon Green

 OS035
Neon Blue

 OS041
Mid Blue

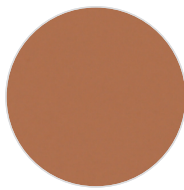
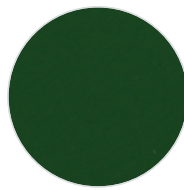
 OS042
Magenta

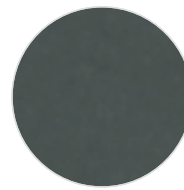
 OS043
Beige

 OS045
Ocean Blue

 OS046
Dark Navy

 OS047
Dark Orange

 OS048
Light Camel

 OS049
Dark Khaki

 OS050
Rose Gold

 OS051
Peach

 OS054
Forest Green

 OS056
Cool Gray

 OS057
Dark Shadow


Charcoal

PVC FLEX

DESCRIPTION

Material for plotter cutting applications

SPECIFICATION

Size: 50 cm x 50 m
N.W: 10,6 kg / roll

TRANSFER CONDITION

The following instructions are given as guideline only.
Temperature: 160°C (320°F)
Pressing Time: 10-12 seconds

SUITABLE FOR

*Cotton, mixtures of polyester / cotton and polyester / acrylic or for similar textile.
Not suitable for treated and dyed garments.*

NOTICE

*We offer you to test the product against the color migration.
Pressing instruction may change, according to the fabric type.*

ÜRÜN TANIMI

Plotter kesim uygulamaları için malzeme

ÖZELLİKLER

Ebat: 50 cm x 50 m
Net Ağırlık: 10,6 kg / roll

BASKI TALİMATLARI

Aşağıdaki talimatlar sadece normal şartlara göredir.
Derece: 160°C (320°F)
Baskı Süresi: 10-12 saniye

UYGUN KUMAŞLAR

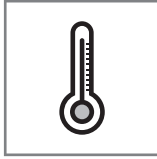
*Pamuk, polyester / pamuk karışımı, polyester / akrilik vb tekstiller için uygundur.
Boyanmış ve işlem görmüş kumaşlar için uygun değildir.*

UYARI

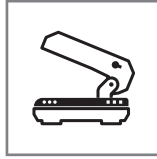
Boyalı kumaşlarda migrasyon ihtimaline karşı üretim öncesi gerekli testlerin yapılmasını öneririz. Kullanılacak kumaşın içeriğine göre, basım talimatları değişebilir.



Cut the image in reverse
Deseni tersten kesiniz



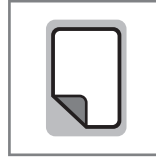
160°C (320°F)



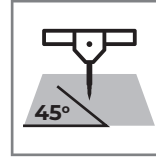
4 Bar pressure
4 Bar basınç



10-12 seconds for pressing
10-12 saniye presleme



COOL Peel
Soğuk çekim



45°



After 24H with application
Uygulamadan 24 saat sonra