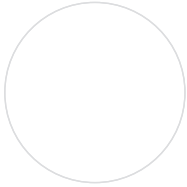
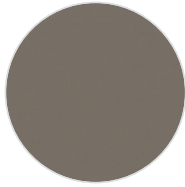


## RUBBER (700-750 MICRON)



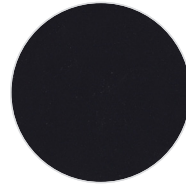
White  
S100



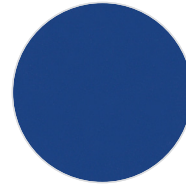
Grey  
S105



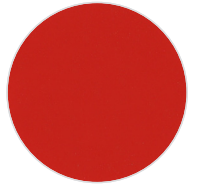
Black  
S199



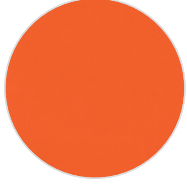
Navy Blue  
S205



Royal Blue  
S230



Red  
S350



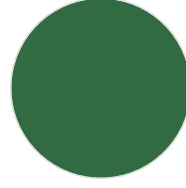
Orange  
S370



Gold Yellow  
S410



Medium Yellow  
S430



Green  
S540



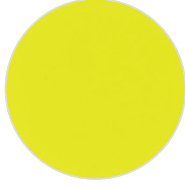
Gold  
M410



Silver  
M150



Pink Fluo  
F390



Yellow Fluo  
F450



Green Fluo  
F540

## 3D REFLECTIVE FILM (600 MICRON)



HT 3000 D  
Silver



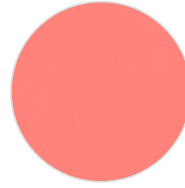
HT 3500 D  
Dark Gray



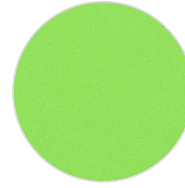
HT 3005 H-D  
Black Rainbow



HT 210 D  
F / Yellow



HT 211 D  
F / Pink



HT 212 D  
F / Green



HT 213 D  
F / Orange

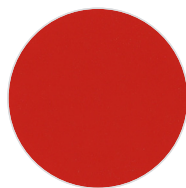
## SPESSO (500 MICRON)



White  
S100



Black  
S199



Red  
S350

## FOAM (1000 MICRON)



White



Black

# RUBBER / 3D REFLECTIVE FILM / SPESSO / FOAM

## DESCRIPTION

**RUBBER** - Only for plotter cutting  
**3D REFLECTIVE FILM** - Laser and plotter cutting  
**SPESSO** - Only for plotter cutting  
**FOAM** - Laser and plotter cutting applications

## SPECIFICATION

<b>RUBBER</b> Size: 50 cm x 20 m N.W: 5 kg / roll	<b>SPESSO</b> Size: 50 cm x 25 m N.W: 7 kg / roll
<b>3D REFLECTIVE FILM</b> Size: 50 cm x 25 m N.W: 9,25 kg / roll	<b>FOAM</b> Size: 50 cm x 20 m N.W: 6 kg / roll

## TRANSFER CONDITION

The following instructions are given as guideline only.  
**Temperature:** 160°C (320°F) - **Thick Fabric:** 180°C (356°F)  
**Pressing Time:** 12 seconds

**FOAM**  
**Temperature:** 165°C (329°F) - **Pressing Time:** 15 seconds

## SUITABLE FOR

*Cotton, mixtures of polyester / cotton and polyester / acrylic or for similar textile.  
Not suitable for treated and dyed garments.*

## NOTICE

*We offer you to test the product against the color migration.  
Pressing instruction may change, according to the fabric type.*

## ÜRÜN TANIMI

**RUBBER** - Sadece plotter kesim  
**3D REFLECTIVE FILM** - Lazer ve plotter kesim  
**SPESSO** - Sadece plotter kesim  
**FOAM** - Lazer ve plotter kesim uygulamaları için malzeme

## ÖZELLİKLER

<b>RUBBER</b> Ebat: 50 cm x 20 m Net Ağırlık: 5 kg / roll	<b>SPESSO</b> Ebat: 50 cm x 25 m Net Ağırlık: 7 kg / roll
<b>3D REFLECTIVE FILM</b> Ebat: 50 cm x 25 m Net Ağırlık: 9,25 kg / roll	<b>FOAM</b> Ebat: 50 cm x 20 m Net Ağırlık: 6 kg / roll

## BASKI TALİMATLARI

Aşağıdaki talimatlar sadece normal şartlara göre.  
**Derece:** 160°C (320°F) - **Kalın Kumaş:** 180°C (356°F)  
**Baskı Süresi:** 12 saniye

**FOAM**  
**Derece:** 165°C (329°F) - **Baskı Süresi:** 15 saniye

## UYGUN KUMAŞLAR

*Pamuk, polyester / pamuk karışımı, polyester / akrilik vb tekstiller için uygundur.  
Boyanmış ve işlem görmüş kumaşlar için uygun değildir.*

## UYARI

*Boyalı kumaşlarda migrasyon ihtimaline karşı üretim öncesi gerekli testlerin yapılmasını öneririz. Kullanılacak kumaşın içeriğine göre, basım talimatları değişebilir.*



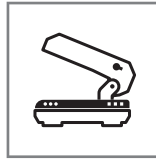
Cut the image in reverse  
Deseni tersten kesiniz



Normal Kumaş: 160°C (320°F)  
Kalın Kumaş: 180°C (356°F)

Normal Fabric: 160°C (320°F)  
Thick Fabric: 180°C (356°F)

**FOAM**  
165°C (329°F)

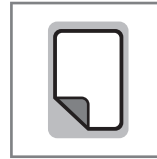


4 Bar pressure  
4 Bar basınç



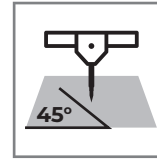
12 seconds for pressing  
12 saniye presleme

**FOAM**  
15 seconds for pressing  
15 saniye presleme



COOL Peel  
Soğuk çekim

**FOAM**  
HOT Peel  
Sıcak çekim



45°



After 24H with application  
Uygulamadan 24 saat sonra