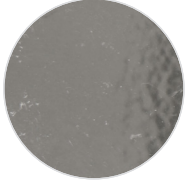
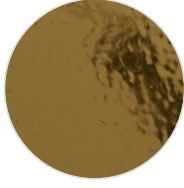


SLIM FOIL (55-65 MICRON)



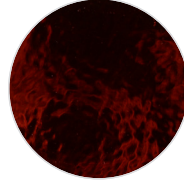
SM-01
Silver



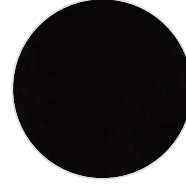
SM-02
Gold



SM-03
Royal Blue



SM-04
Red



SM-05
Black



SM-06
Matt Black



SM-07
White



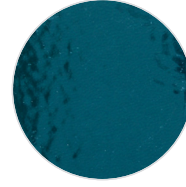
SM-08
Green



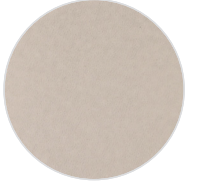
SM-09
Brown



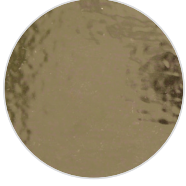
SM-10
Fuchsia



SM-11
Blue



SM-12
Matt Silver



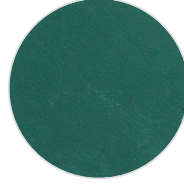
SM-13
Light Gold



SM-14
Matt Red



SM-15
Matt Royal Blue



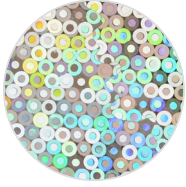
SM-16
Mint



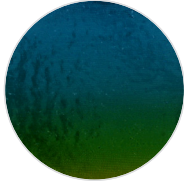
SM-17
Matt Gold



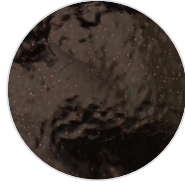
SM-18
Silver AB



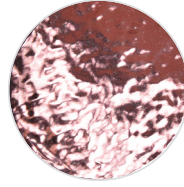
SM-19
Spangle Silver AB



SM-20
Rainbow



SM-21



SM-23
Rose Gold

SLIM FOIL

DESCRIPTION

Material for laser and plotter cutting applications

SPECIFICATION

Size: 50 cm x 50 m
N.W: 7 kg / roll

TRANSFER CONDITION

The following instructions are given as guideline only.
Temperature: 160°C (320°F)
Pressing Time: 10 seconds

SUITABLE FOR

*Cotton, mixtures of polyester / cotton and polyester / acrylic or for similar textile.
Not suitable for treated and dyed garments.*

NOTICE

*We offer you to test the product against the color migration.
Pressing instruction may change, according to the fabric type.*

ÜRÜN TANIMI

Lazer ve plotter kesim uygulamaları için malzeme

ÖZELLİKLER

Ebat: 50 cm x 50 m
Net Ağırlık: 7 kg / roll

BASKI TALİMATLARI

Aşağıdaki talimatlar sadece normal şartlara göredir.
Derece: 160°C (320°F)
Baskı Süresi: 10 saniye

UYGUN KUMAŞLAR

*Pamuk, polyester / pamuk karışımı, polyester / akrilik vb tekstiller için uygundur.
Boyanmış ve işlem görmüş kumaşlar için uygun değildir.*

UYARI

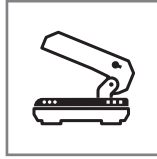
Boyalı kumaşlarda migrasyon ihtimaline karşı üretim öncesi gerekli testlerin yapılmasını öneririz. Kullanılacak kumaşın içeriğine göre, basım talimatları değişebilir.



Cut the image in reverse
Deseni tersten kesiniz



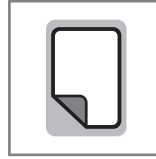
160°C (320°F)



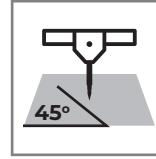
4 Bar pressure
4 Bar basınç



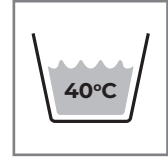
10 seconds for pressing
10 saniye presleme



COOL Peel
Soğuk çekim



45°



After 24H with application
Uygulamadan 24 saat sonra